



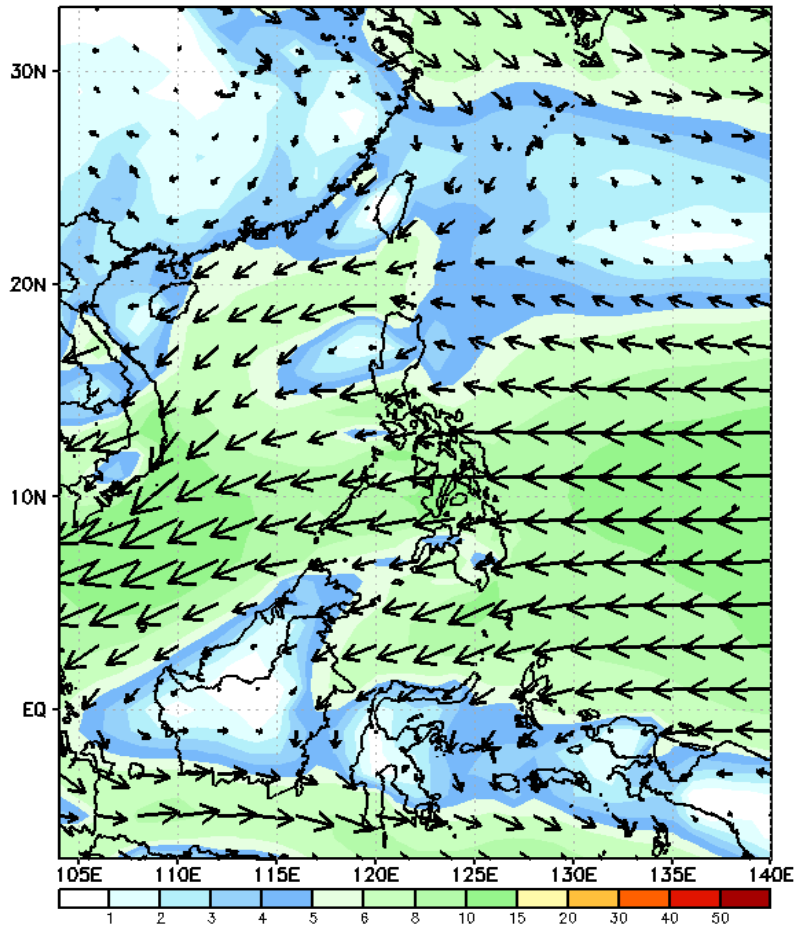
Week 1 & Week 2 Forecast for the Philippines using GEFS Model



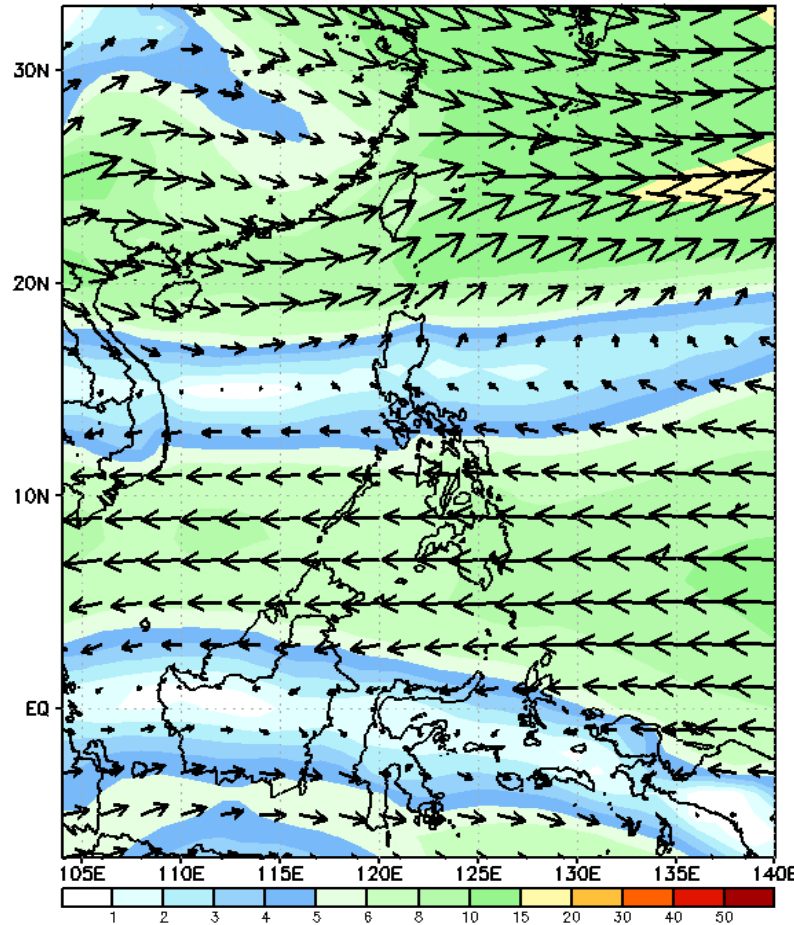
GEFS Week-1 Wind Forecasts:

Week 1: Jan 15-21, 2025

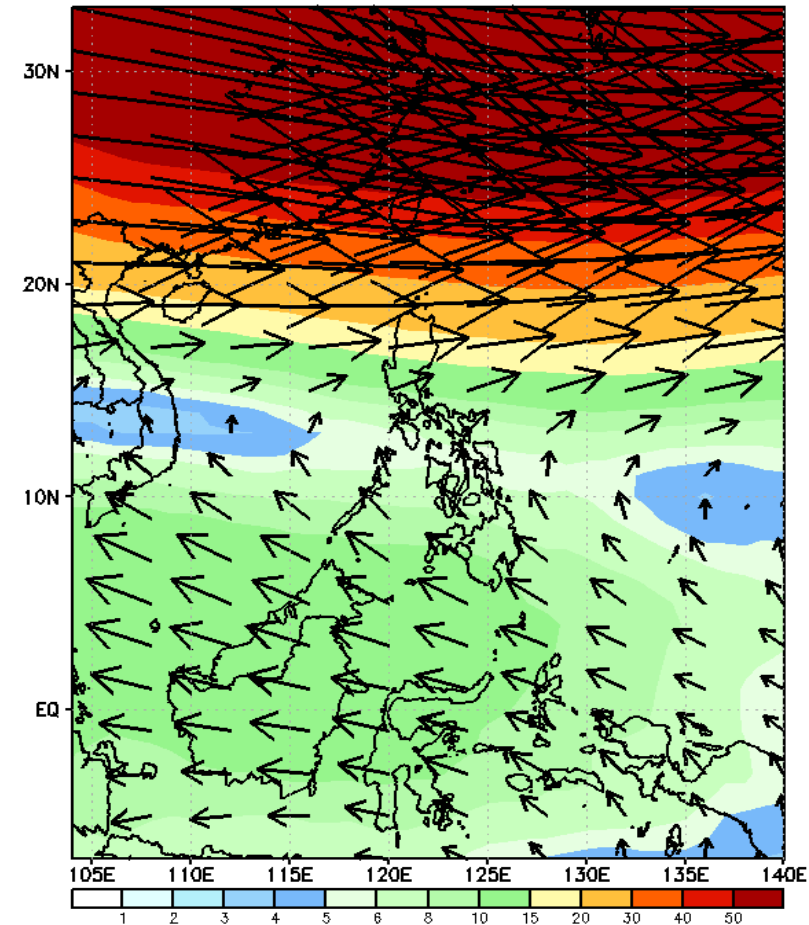
GEFS Week-1 850-hPa Wind Total
Valid: 20250115 - 20250121



GEFS Week-1 700-hPa Wind Total
Valid: 20250115 - 20250121

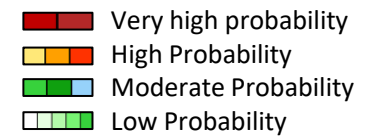


GEFS Week-1 200-hPa Wind Total
Valid: 20250115 - 20250121



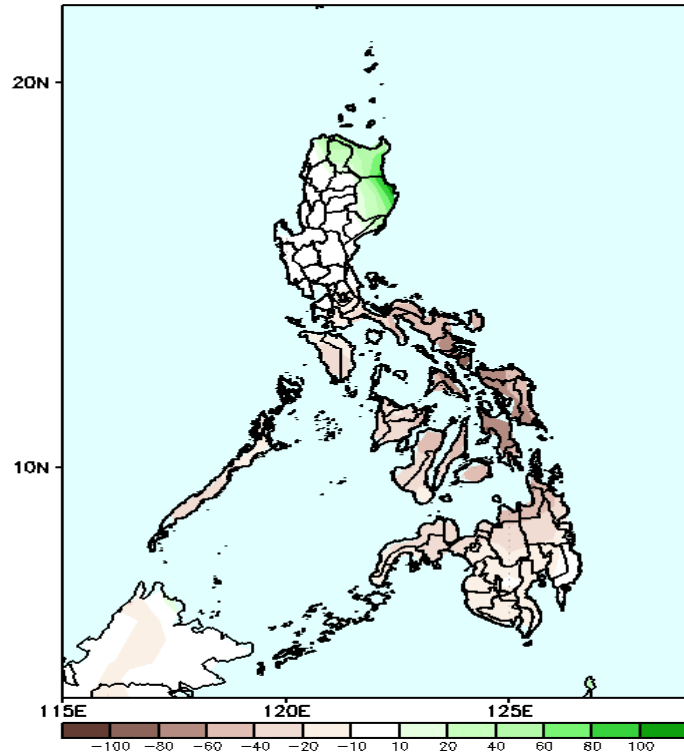
Northeast Monsoon affecting Extreme Northern Luzon while Easterlies affecting the rest of the country during the forecast period

Precipitation Anomaly and Exceedance Probability > 25/50 mm



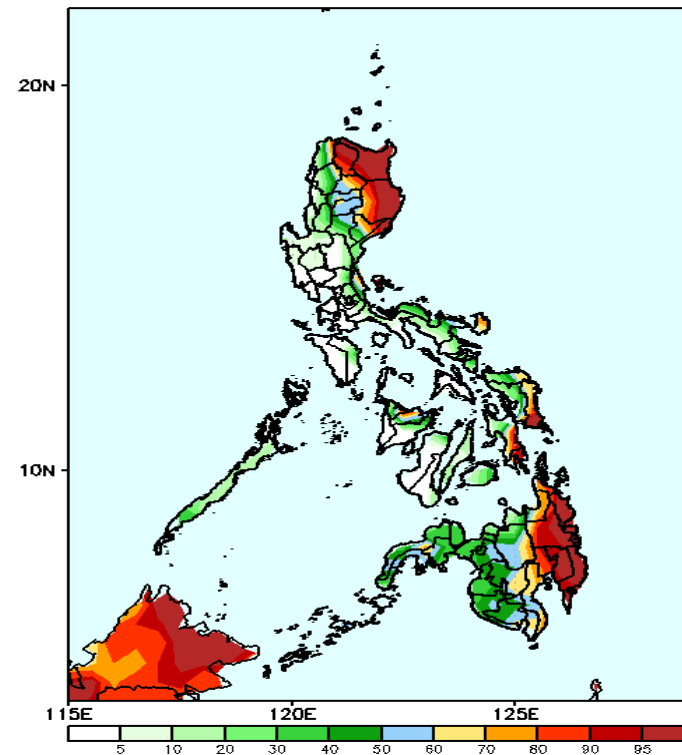
Week 1: Jan 15-21, 2025

GEFS Week-1 Precip Anomaly
Valid: 20250115 - 20250121



Increase of Rainfall of 20-60mm is expected in most parts of Northern Luzon; while 20-80mm rainfall deficit is expected for the rest of the country.

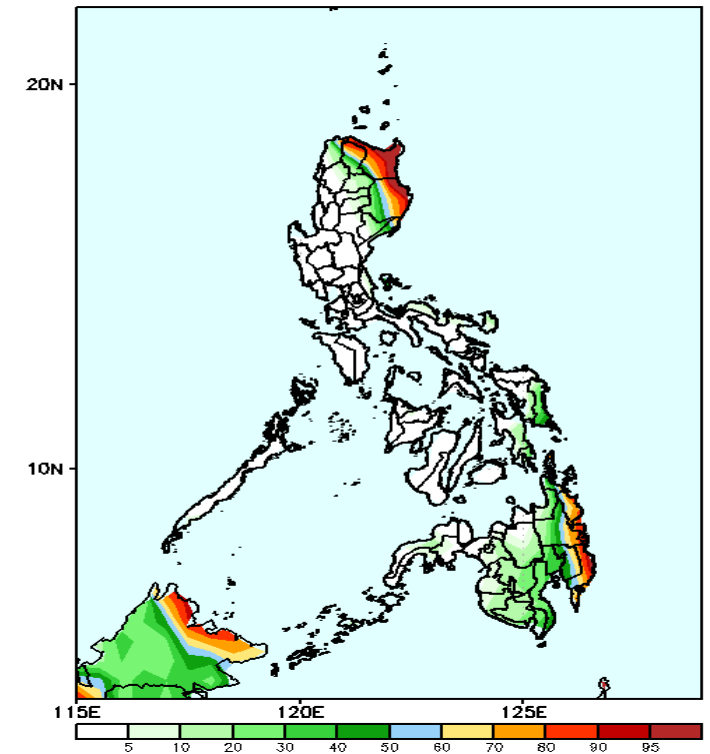
GEFS Week-1 Exceedance Prob. > 25mm
Valid: 20250115 - 20250121



Probability to Exceed 25mm

- High to very high over most parts Apayao, Cagayan, Isabela, Eastern Samar, Southern Leyte and Eastern Mindanao;
- Moderate to high over the rest CAR, Catanduanes, Capiz and the rest of Mindanao;
- Low to Moderate over the rest of the country.

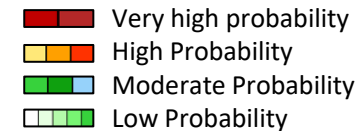
GEFS Week-1 Exceedance Prob. > 50mm
Valid: 20250115 - 20250121



Probability to Exceed 50mm

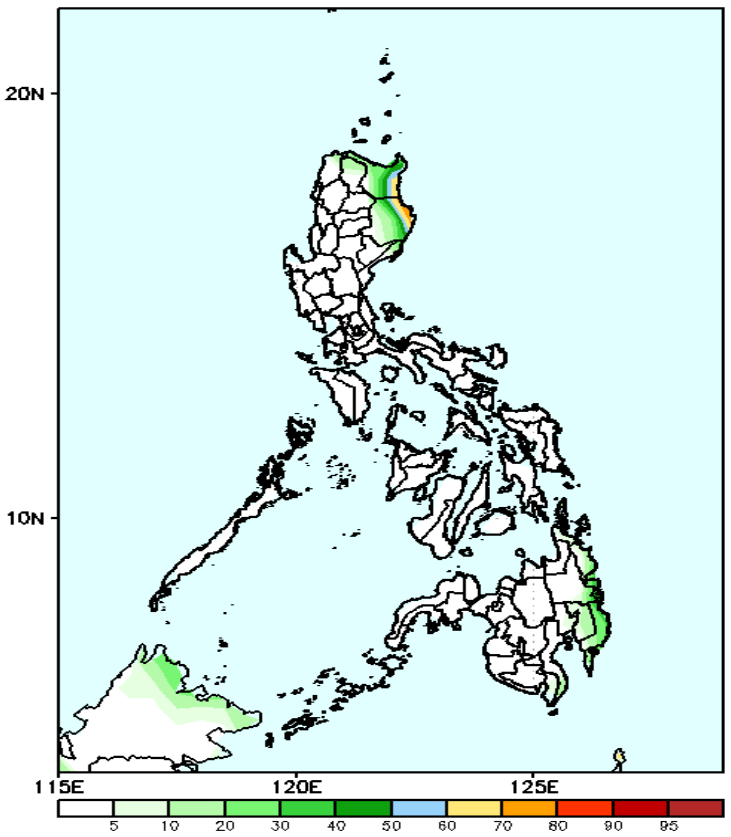
- High to very high over the easternmost part of Cagayan and Isabela
- Moderate to high over Apayao, the rest of Cagayan and Isabel, portion of Eastern Samar, and Eastern Mindanao;
- Low to moderate over the rest of Northern Luzon and Mindanao.
- Low over the rest of the country.

Exceedance Probability > 100/150/200 mm



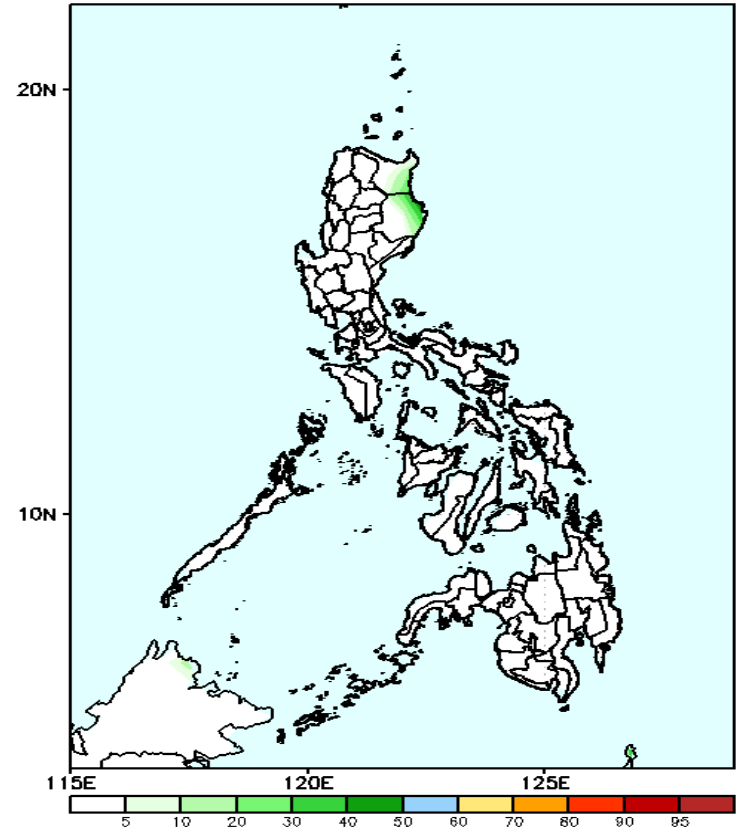
Week 1: Jan 15-21, 2025

GEFS Week-1 Exceedance Prob. > 100mm
Valid: 20250115 - 20250121



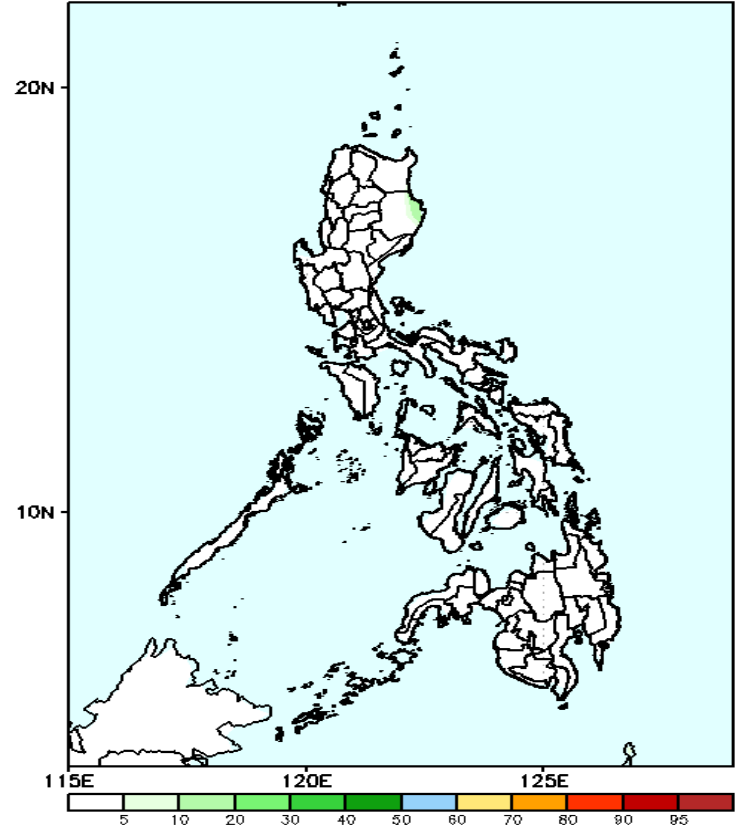
- Probability to Exceed 100mm**
- Moderate to high over easternmost of Isabela and Cagayan;
 - Low over the rest of the country.

GEFS Week-1 Exceedance Prob. > 150mm
Valid: 20250115 - 20250121



- Probability to Exceed 150mm**
- Low across the country.

GEFS Week-1 Exceedance Prob. > 200mm
Valid: 20250115 - 20250121

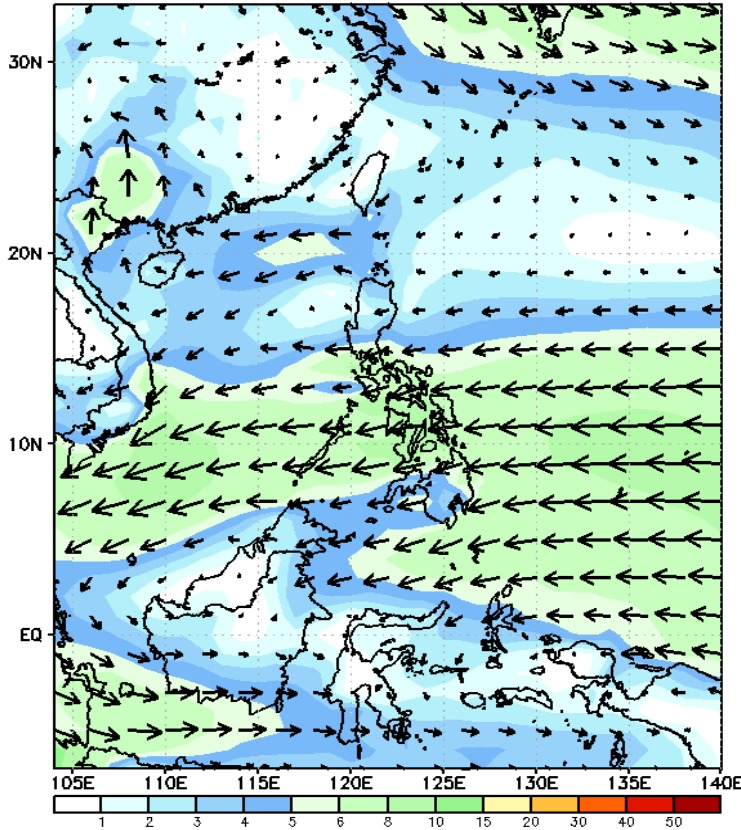


- Probability to Exceed 200mm**
- Low across the country.

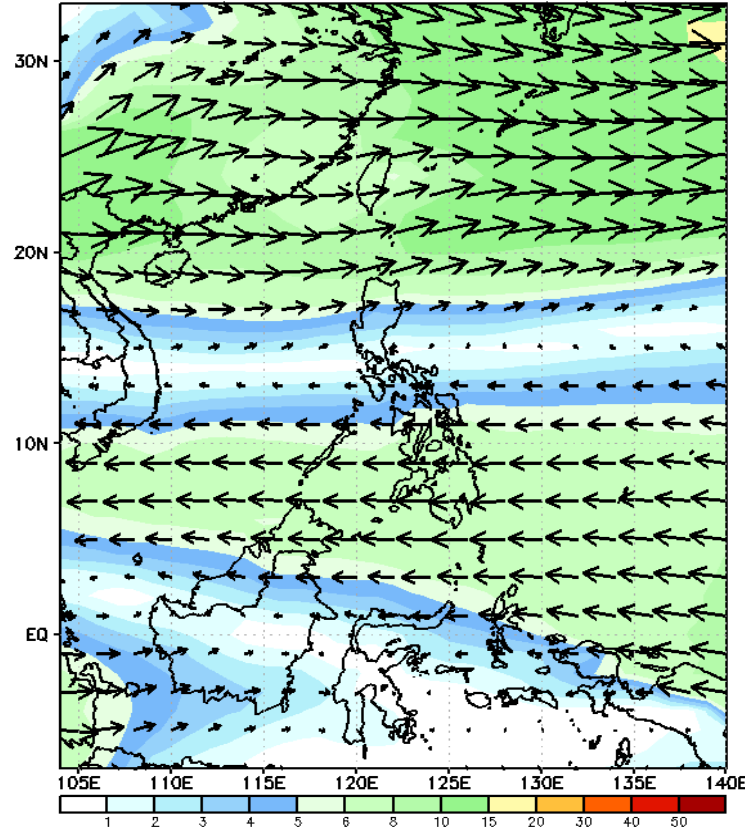
GEFS Week-2 Wind Forecasts:

Week 2: Jan 22-28, 2025

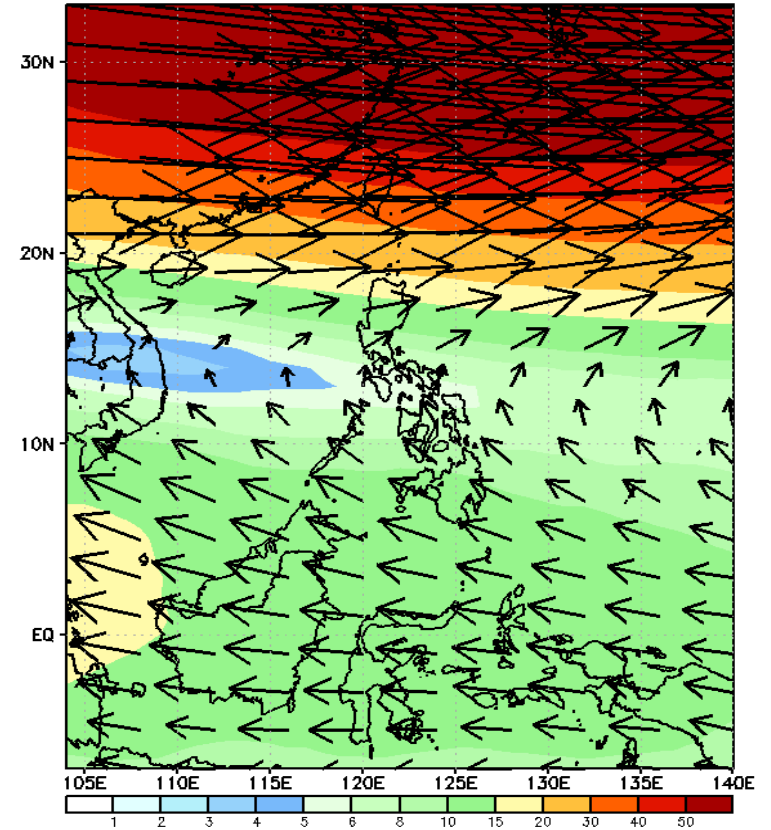
GEFS Week-2 850-hPa Wind Total
Valid: 20250122 - 20250128



GEFS Week-2 700-hPa Wind Total
Valid: 20250122 - 20250128

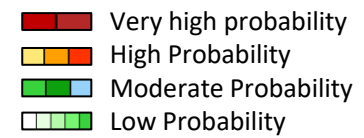


GEFS Week-2 200-hPa Wind Total
Valid: 20250122 - 20250128



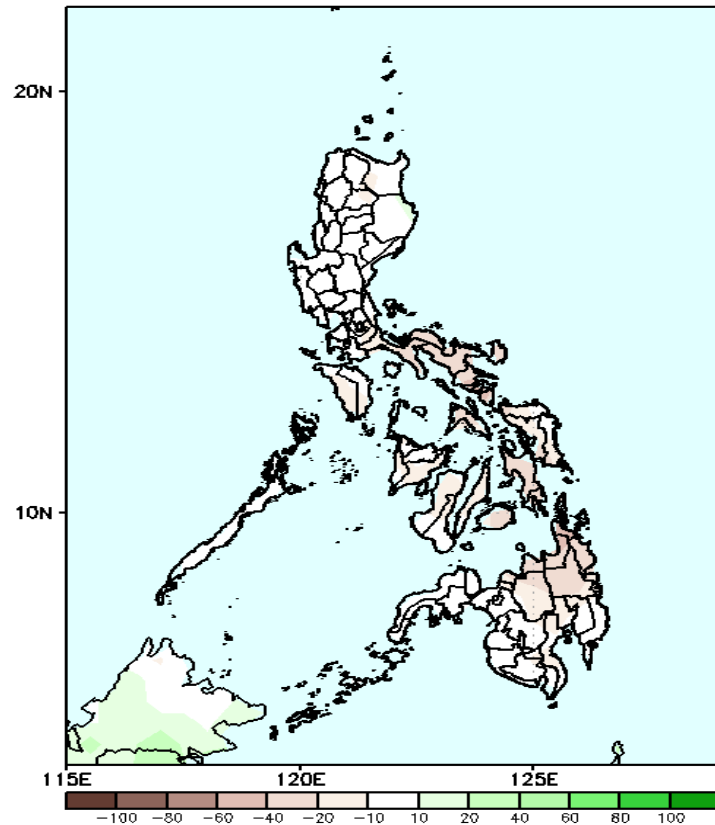
Northeast Monsoon will likely affect Northern Luzon while Easterlies will likely affect the rest of the country during the forecast period

Precipitation Anomaly and Exceedance Probability > 25/50 mm



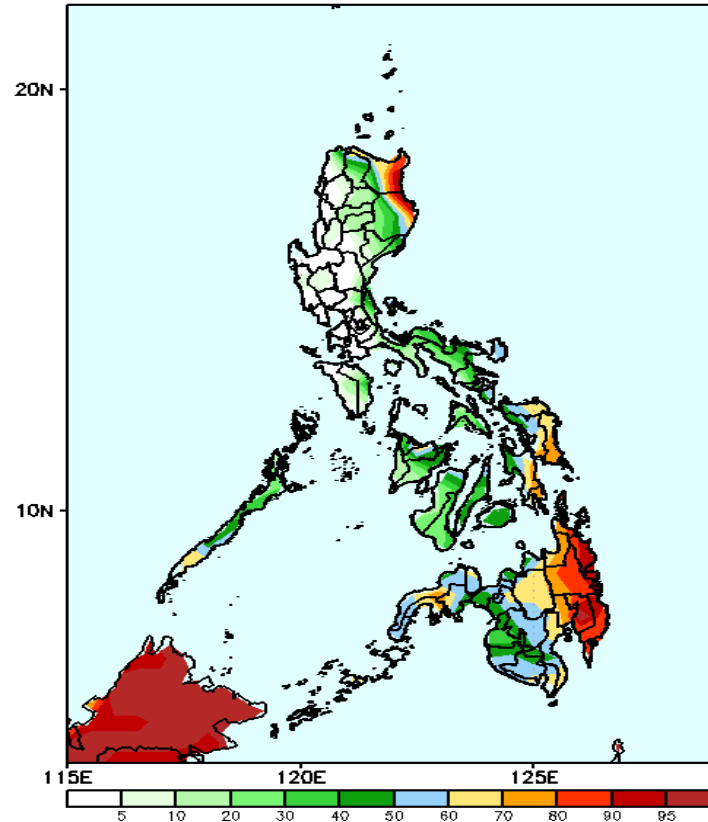
Week 2: Jan 22-28, 2025

GEFS Week-2 Precip Anomaly
Valid: 20250122 - 20250128



Rainfall deficit of 10-60mm is expected in most parts of the country.

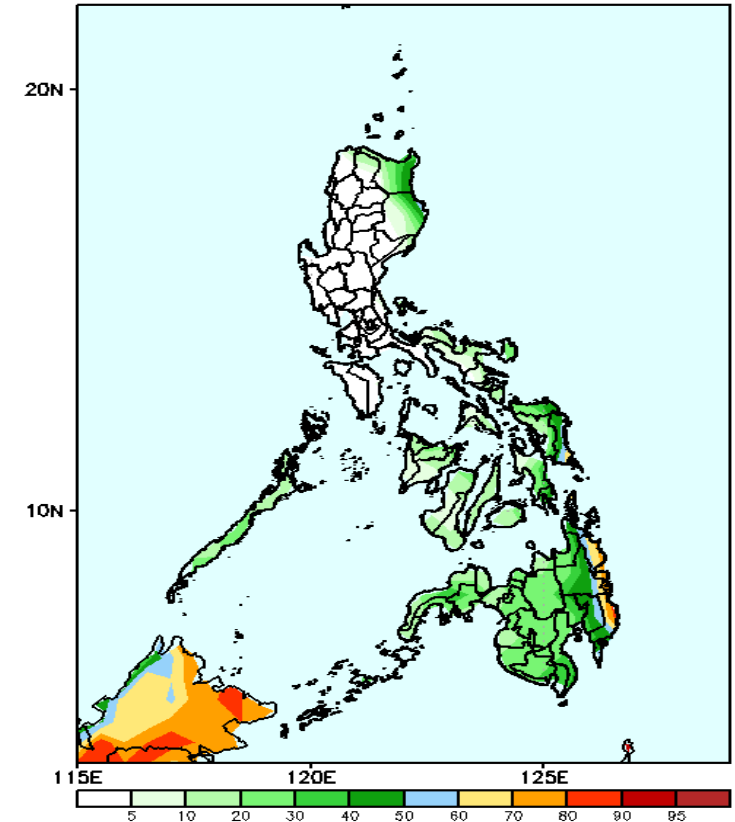
GEFS Week-2 Exceedance Prob. > 25mm
Valid: 20250122 - 20250128



Probability to Exceed 25mm

- High to very high over eastern parts of Cagayan, and Isabela and most of Eastern Mindanao;
- Moderate to high over Batanes, the rest of Cagayan and Isabela, northern part of Bicol Region, Palawan, Capiz, the rest of Eastern Visayas and Mindanao;
- Low to Moderate over the rest of the country.

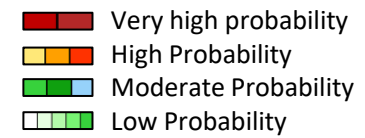
GEFS Week-2 Exceedance Prob. > 50mm
Valid: 20250122 - 20250128



Probability to Exceed 50mm

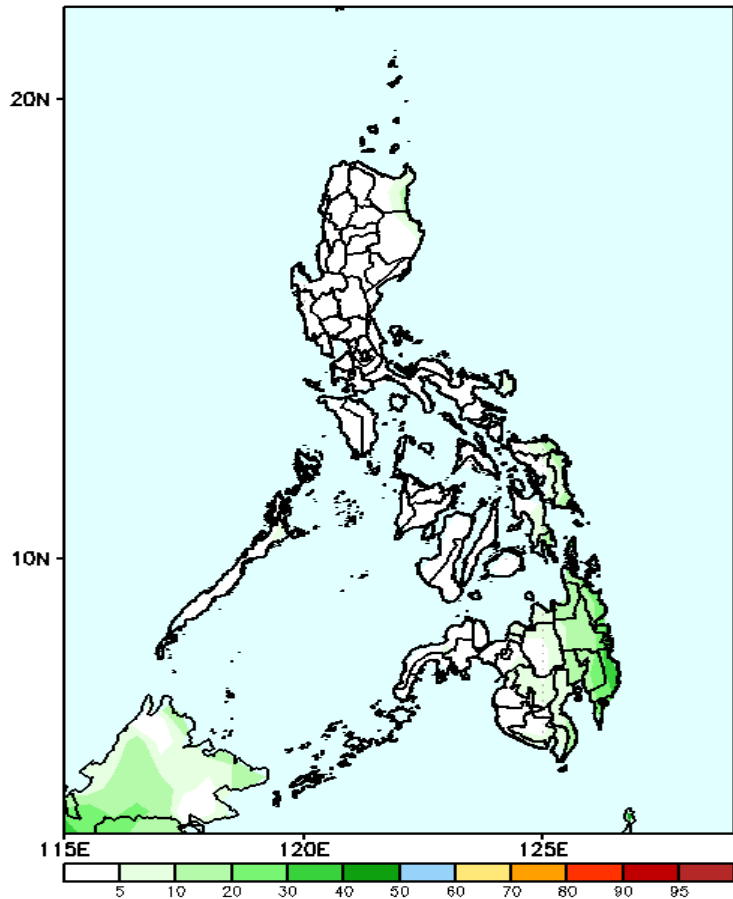
- Moderate to high over Batanes, the easternmost part of Cagayan and Isabela, Eastern Samar and Eastern Mindanao;
- Low to moderate over Palawan, and the rest of Eastern Luzon, Visayas, and Mindanao;
- Low over the rest of Luzon.

Exceedance Probability > 100/150/200 mm



Week 2: Jan 22-28, 2025

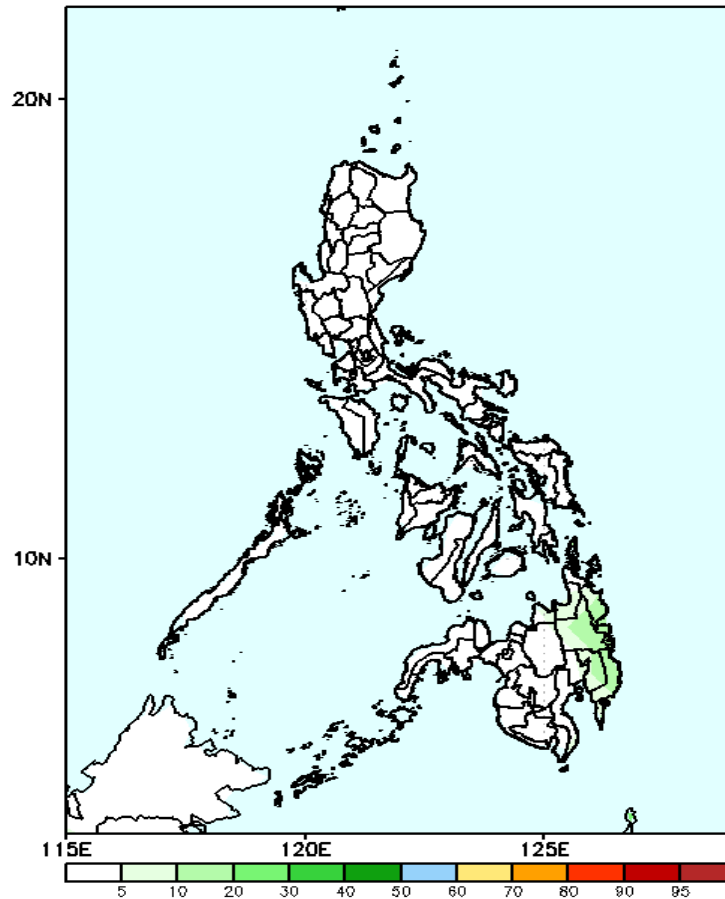
GEFS Week-2 Exceedance Prob. > 100mm
Valid: 20250122 - 20250128



Probability to Exceed 100mm

- Low across the country.

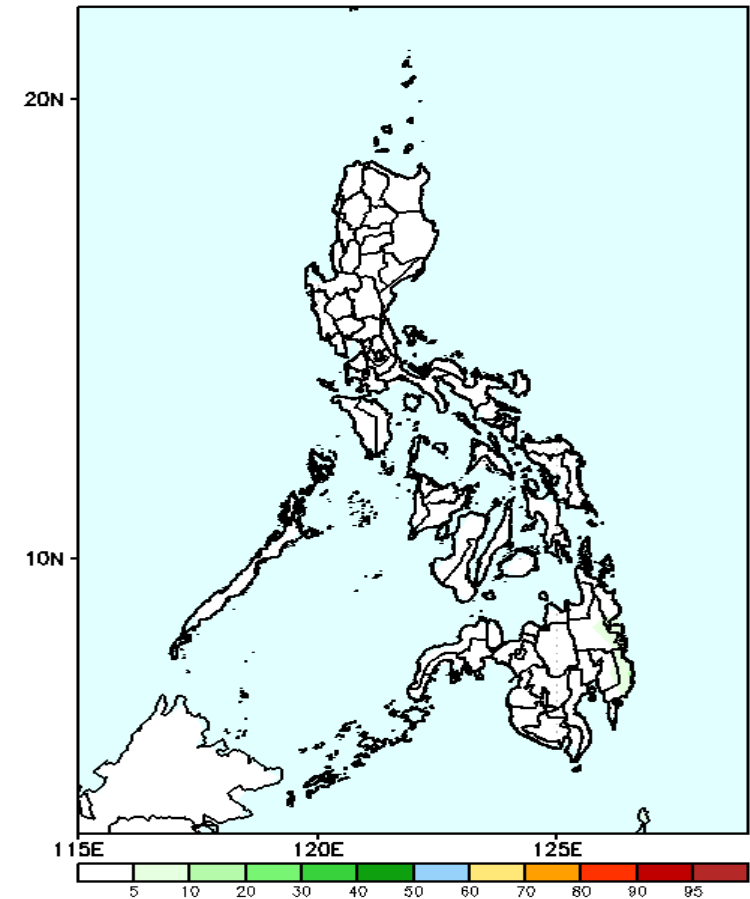
GEFS Week-2 Exceedance Prob. > 150mm
Valid: 20250122 - 20250128



Probability to Exceed 150mm

- Low across the country.

GEFS Week-2 Exceedance Prob. > 200mm
Valid: 20250122 - 20250128

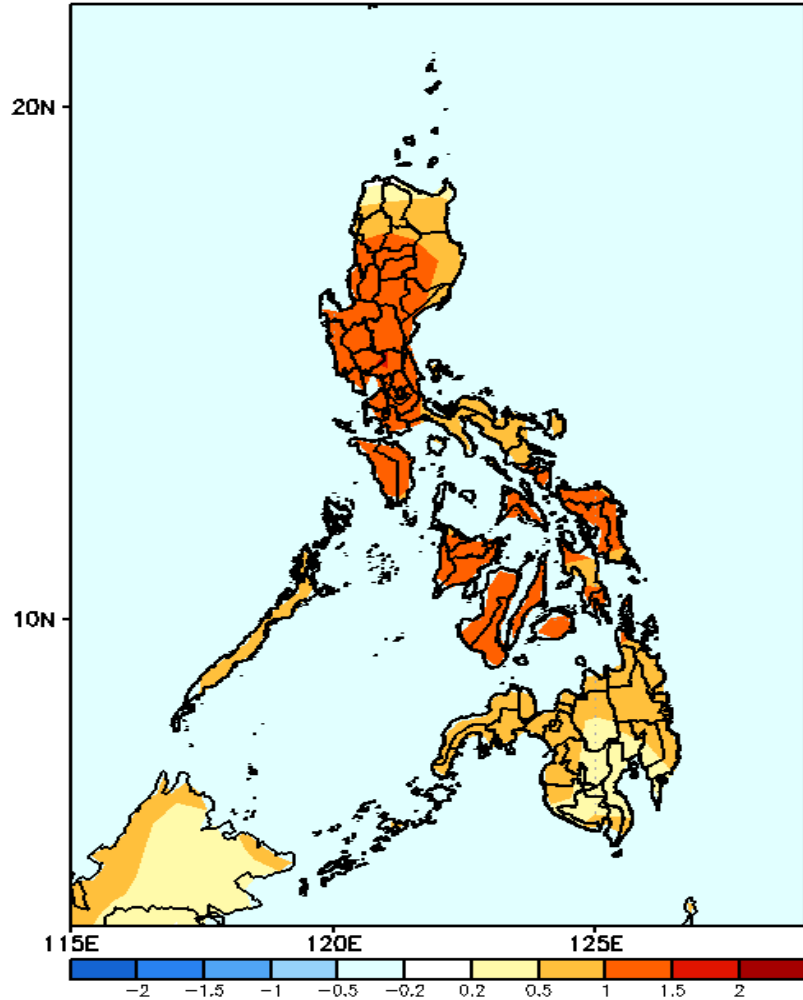


Probability to Exceed 200mm

- Low across the country.

GEFS Week-1 & 2 Forecasts: T2m Anomaly

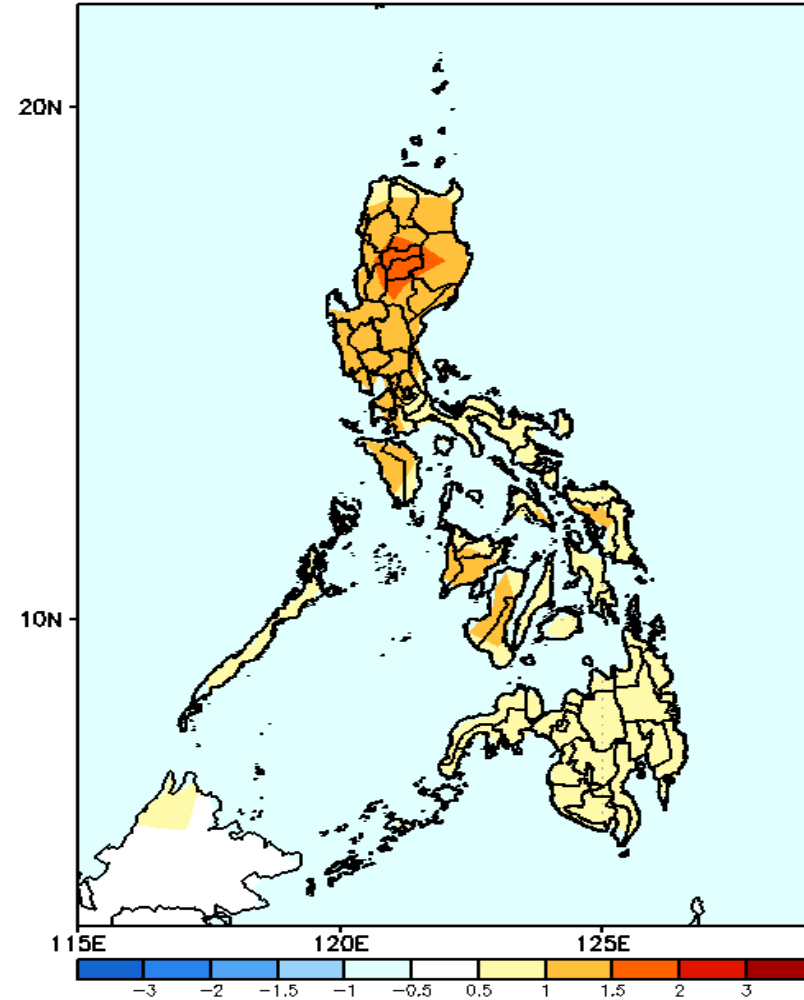
GEFS Week-1 T2m Anomaly
Valid: 20250115 - 20250121



2m Temperature Week 1: Jan 15-21, 2025

Slightly warmer to warmer than average surface air temperature will likely be experienced in in most parts of the country.

GEFS Week-2 T2m Anomaly
Valid: 20250122 - 20250128



2m Temperature Week 2: Jan 22-28, 2025

Slightly warmer to warmer than average surface air temperature will likely be experienced in in most parts of the country.